



Info-Explorer



“A powerful, affordable BI tool supporting integrated analysis & budgeting”

Why use Info-Explorer?

Analyze business performance in multi-dimensional cubes, with the familiarity of a spreadsheet-type layout. Combine data from multiple sources. Ideal for integrated analysis and budgeting.

Data Sources & Processing

- Fed from your main database, with background in-memory processing
- Include data from SQL & ODBC databases, e.g. Spire PostgreSQL, Sage 300 and Sage CRM
- Incorporate user-defined calculations
- Work online or offline
- Export views to Microsoft Excel®, CSV or HTML
- Security options to protect your data
- Automate the refresh of Info-Explorer cubes

 Use sample Info-Explorer cubes to start analyzing your Sage 300 and Spire data.

OUR DECISION MAKING IS SO MUCH FASTER AND BETTER INFORMED NOW.



Slice & Dice Analysis

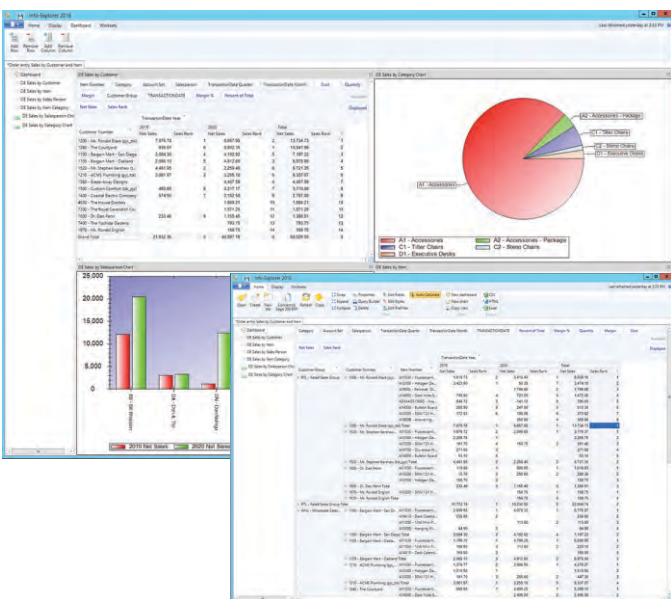
- Change dimensions (e.g. product, customer, region, period, employee) for clearer insight
- Dynamically control your view, filter your data, add and remove facts and dimensions
- Roll up and consolidate to focus on high-level results
- When using Sage 300, drill through to Sage 300 data entry screens for more information

Presentation & Personalization

- Create and save multiple views, and convert to charts
- Create your own dashboards, highlighting exceptions and trends
- Apply your own formatting styles, e.g. 'traffic light' reporting
- Personalize, e.g. use custom styles to highlight amended data

Lite Edition – Free!

- A free, functional edition - no time limit, no commitment
- Add intuitive BI to your accounting application
- Analyze your own data within pre-defined sample cubes
- No need to upgrade unless you want additional features



Dashboard and View analyzing Sales Ranking

Budgeting Features

The Writeback edition lets you use the same interface for analysis and budgeting:

- Budget beyond General Ledger level
- Build budgets bottom-up or top-down
- Insert a budget total and let Info-Explorer populate the build-up
- Adjust budgets using multiple spread methods
- Maintain multiple budget versions
- Write budget data back to your main database
- Combine actual and budget data for forecasting

When using Sage 300, combine with **Process Scheduler** to distribute cubes automatically and with **Optional Tables** to store custom data and incorporate into the budgeting process.

Sample Cubes Included

Use them to simplify getting started, or as a base for creating your own cubes. Available for:

- Sage 300 GL, AR, AP, PO, PJC, IC, OE Sales Analysis, US and Canadian Payroll
- Orchid Extender, RMA, Bin Tracking and other selected Sage 300 3rd party products
- Spire Sales and Purchase analysis, AR, AP and GL
- Budgeting and forecasting

Item Number	2019 Net Sales	Margin %	2020 Net Sales	Margin %	2021 Net Sales	Margin %
A11000 - Fluorescent Desk Lamp	19,772.90	65.55	22,796.20	63.95	33,561.00	66.17
A11001 - LED Mini Fluorescent Bulb	120.70	100.00	273.00	100.00	533.70	99.00
A13100 - Hanging Desk Light	7,300.75	89.45	805.60	88.45	8,196.30	89.00
A13101 - 5000/120 Hanging Bulb	738.45	82.85	2,258.14	82.05	2,867.30	82.70
A14000 - Desk Note Book	648.10	88.55	6,743.55	84.24	7,691.05	84.70
A14001 - Desk Calendar Pad	559.95	91.07	3,356.67	87.50	3,891.22	84.23
A14002 - Bulletin Board	119.90	94.66	1,767.60	94.00	2,068.40	87.20
A14700 - Dry-erase White Board Markers	271.80	95.10	271.80	95.10	271.80	95.70
A14701 - Hanging File Folder	64.90	74.95	64.90	74.95	64.90	74.90
A19000 - Accounting Machine	349.75	88.11	359.00	88.00	359.00	89.00
A19001 - Personal Digital Assistant	1,798.95	88.93	1,798.95	88.93	1,798.95	89.00
A21400/13000 - Image 1000 Series Desk	1,278.00	88.00	2,119.00	88.00	2,119.00	89.00
A21400/5000S - Image 5000 Series Desk	931.80	88.12	931.80	88.12	931.80	88.10
C1 - Toner Cartridges	1,480.70	82.50	1,480.70	82.50	1,480.70	82.80
C12000 - Kyocera 230 Arm Toner-Brown	1,663.70	88.00	1,663.70	88.00	1,663.70	88.40
C2 - Stacks Chairs	2,220.00	88.00	2,220.00	88.00	2,220.00	88.40
C22000 - 2300 Series Feature Chair	584.00	88.00	584.00	88.00	584.00	88.40
C71000 - High Back Arm Chair	1,636.00	88.00	1,636.00	88.00	1,636.00	88.40
D1 - Executive Desks	1,884.31	88.10	1,884.31	88.10	1,884.31	88.10
D16070 - Exec. Conference 12m X 20m	44,997.19	88.00	44,997.19	88.00	44,997.19	88.10
Grand Total	21,832.34	88.44	44,997.19	88.00	68,020.95	88.10

View showing traffic light reporting



Account No.	Account	Budget	Budget	Budget	Budget	Budget	Budget
4000	Sales	-533,000.00	-533,000.00	-533,000.00	-533,000.00	-533,000.00	-533,000.00
4010	Sales ac.	-30,000.00	-30,000.00	-30,000.00	-30,000.00	-30,000.00	-30,000.00
4020	Sales ch.	-14,000.00	-14,000.00	-14,000.00	-14,000.00	-14,000.00	-14,000.00
4030	Sales de.	-41,000.00	-41,000.00	-41,000.00	-41,000.00	-41,000.00	-41,000.00
4040	Sales ca.	-24,000.00	-24,000.00	-24,000.00	-24,000.00	-24,000.00	-24,000.00
4050	Sales di.	-52,000.00	-52,000.00	-52,000.00	-52,000.00	-52,000.00	-52,000.00
4060	Sales sa.	-14,000.00	-14,000.00	-14,000.00	-14,000.00	-14,000.00	-14,000.00
15	Revenue Total	728,000.00	728,000.00	728,000.00	728,000.00	728,000.00	728,000.00
21	Fixed Ch.	9,000.00	9,000.00	9,000.00	9,000.00	9,000.00	9,000.00
8560	Rent off.	38,000.00	38,000.00	38,000.00	38,000.00	38,000.00	38,000.00
21	Fixed Charges Total	47,000.00	47,000.00	47,000.00	47,000.00	47,000.00	47,000.00

Budget Cube: Apply a top-down 12% amendment

Edition Guide

LITE – FREE!

- Analyze your data with pre-defined cubes (*published on Info-Explorer.com*)
- Customize cubes, charts and dashboards (*but not underlying data queries*)

STANDARD

- Create new cubes
- Create new data queries (*or amend existing ones*)
- Export cube data

WRITEBACK

- Budgeting (*see Budgeting Features on this page*)
- Write back to your main database (Sage 300 or other SQL and ODBC databases)



My client loves Orchid Info-Explorer. In their words, it has them 'purring like a kitten'.
MARK BINKLEY, DATAQUEST SOLUTIONS, IL, USA

More information

Further information about Info-Explorer, including videos, is available from our website: www.info-explorer.com.



Minimum Requirements

Requires Microsoft .NET Framework 4 and a supported version of Windows. Licensed per PC. Users do not need to be logged into their ERP Application to use the cubes. ERP Licence is required to drill through to the underlying screens where supported.

Contact your Solution Provider

© 2023 Orchid Systems. All rights reserved.

All trademarks are registered trademarks or trademarks of their respective companies.